



Read Window Products, LLC.  
5900 Weisbrook Lane  
Knoxville, TN 37909  
Phone: 865-288-6243  
Fax: 865-675-5572

## **SUBMITTAL**

**PROJECT:** Covenant Health Urgent Care

**ARCHITECT:** Barbara McMurry Architects

**CONTRACTOR:** Richardson Turner Construction

**SPECIFICATION:** 12 24 00 Window Treatments

**PRODUCT:** 1" Metal Blinds with Cordless Lift

**SUPPLIER:** Read Window Products, LLC

**Revision:** 1

**Date:** 10/14/2025

Read Window Products LLC  
David Storm  
dstorm@readwindow.com

Architect: Davis (04/03/2020) Covenant Health Urgent Care Northshore 24032001-14  
6/26/2025 4:47:12 PM

### 3 BULKHEAD / SOFFIT DETAIL

1 1/2" = 1'-0" | A201

### 2 BULKHEAD DETAIL

1 1/2" = 1'-0" | A201

### 1 FIRST FLOOR REFLECTED CEILING PLAN

1/4" = 1'-0" | A201

Updated from Blinds to Roller Shades 10/14/2015

|                           |               |   |
|---------------------------|---------------|---|
| JPNT 5                    | CEILING PAINT | SHEKWIN WILLIAMS - COLOR: PURE WHITE (SW/7005)  |
| WINDOW TREATMENT FINISHES | WINDOW BLINDS | PROVIDE BLINDS FOR EXAM ROOMS 103, 104, 106, 107, 108, 109 & 110 AND PROCEDURE ROOM 105 - CONFIRM TYPE WITH OWNER |

#### REFLECTED CEILING PLAN GENERAL NOTES

- COORDINATE WITH APPLICABLE NOTES AND DIMENSIONS ON OTHER SHEETS.
- NOTES AND DETAILS ARE TYPICALLY APPLICABLE TO SIMILAR ITEMS ELSEWHERE ON THE SHEET.
- CEILING HEIGHT SHALL BE 8'-0" WHERE NOT NOTED OTHERWISE.
- EXTEND WALL CONSTRUCTION TO DECK IN AREAS WITHOUT FINISHED CEILINGS.
- SEE ELECTRICAL SHEETS FOR SMOKE DETECTOR LOCATIONS.
- PROVIDE STRUCTURAL SUPPORT FOR CEILING-MOUNTED EQUIPMENT AS REQUIRED.
- PROVIDE GYPSUM BOARD SOFFITS ABOVE ALL WALL CABINETS TO FINISHED CEILING, UNLESS OTHERWISE NOTED.
- WHERE NO FINISHED CEILING, PAINT ALL EXPOSED ITEMS INCLUDING: STRUCTURE, MECHANICAL, PLUMBING, ELECTRICAL, HANGER/BRACING WIRES, GYP. BD., AND UNDERSIDE OF ROOF DECK. REFER TO FINISH LEGEND ON A200 SHEETS FOR EXPOSED CEILING FINISH INFORMATION. ENSURE ALL EXPOSED MECHANICAL, PLUMBING, AND ELECTRICAL (INCLUDING ALL WIRING) IS FIELD AS HIGH AS POSSIBLE AND IS INSTALLED IN A NEAT AND ORGANIZED MANNER.
- SUSPENDED CEILINGS SHALL WITHSTAND THE EFFECTS OF EARTHQUAKE MOTIONS DETERMINED ACCORDING TO ASCE/SEI 7.
- CENTER CAN LIGHT FIXTURES, SMOKE DETECTORS, CAMERAS, AND EXIT SIGNS ON CEILING TILE, UNLESS OTHERWISE NOTED.

#### REFLECTED CEILING PLAN KEYNOTES

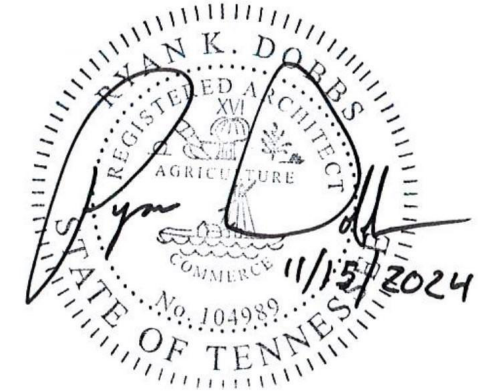
- CONTROL JOINT IN GYPSUM BOARD TO DECK (VERTICAL) AND HORIZONTAL FACE SOFFIT TO DECK, FINISHED TO MATCH SOFFIT
- PROVIDE BLINDS - REFERENCE FINISH LEGEND
- SEE FINISH LEGEND ON A200 SHEETS FOR FINISH INFORMATION. COORDINATE LOCATION OF LIGHT AND LIGHT-GAUGE SUPPORT ABOVE CEILING WITH OWNER.
- PAINT UNDERSIDE OF SOFFIT TO MATCH VERTICAL FACE OF SOFFIT.

#### REFLECTED CEILING PLAN LEGEND

- 2X2 ACOUSTICAL CEILING
- GYPSUM BOARD (INTERIOR)
- CEMENT BOARD SOFFIT (EXTERIOR)
- 2X4 LED LIGHT FIXTURE
- 2X2 LED LIGHT FIXTURE
- LINEAR LIGHT FIXTURE
- RECESSED CAN LIGHT
- 24" X 24" SUPPLY DIFFUSER
- 24" X 24" RETURN REGISTER
- EXHAUST REGISTER



BarberMcMurry Architects  
505 MARKET STREET, SUITE 300  
KNOXVILLE, TN 37902  
865.934.1915  
www.bma1915.com



CONSULTANT LOGO:

PROJECT TEAM:

CIVIL ENGINEER:  
LAND DEVELOPMENT SOLUTIONS  
319 SWIMMING ROAD, SUITE K  
KNOXVILLE, TN 37922  
865.671.2261

STRUCTURAL ENGINEER:  
BENNETT & PLESS  
111 SHERLAKE LANE, SUITE 200  
KNOXVILLE, TN 37922  
865.539.8227

MECHANICAL/PLUMBING ENGINEER:  
ENGINEERING SERVICES GROUP, INC.  
900 E HILL AVE SUITE 300  
KNOXVILLE, TN 37915  
865.522.0393

ELECTRICAL ENGINEER:  
VREELAND ENGINEERS, INC.  
3107 SUTHERLAND AVE.  
KNOXVILLE, TN 37919  
865.637.4461

PROJECT NAME:

## COVENANT HEALTH URGENT CARE NORTHSHORE - TENANT UPFIT

PROJECT OWNER:  
COVENANT HEALTH

902 OSPREY POINT LANE, UNIT 101  
KNOXVILLE, TN 37922

REVISIONS:

| #  | ISSUED BY:  | DATE       |
|----|-------------|------------|
| T2 | ADDENDUM #2 | 06.19.2025 |

PROJECT NUMBER: 2404500  
PIC / PM: RKD / SWP

DRAWN BY / CHECKED BY: SWP/AES / AJH  
PROJECT ISSUE DATE: 11.15.2024

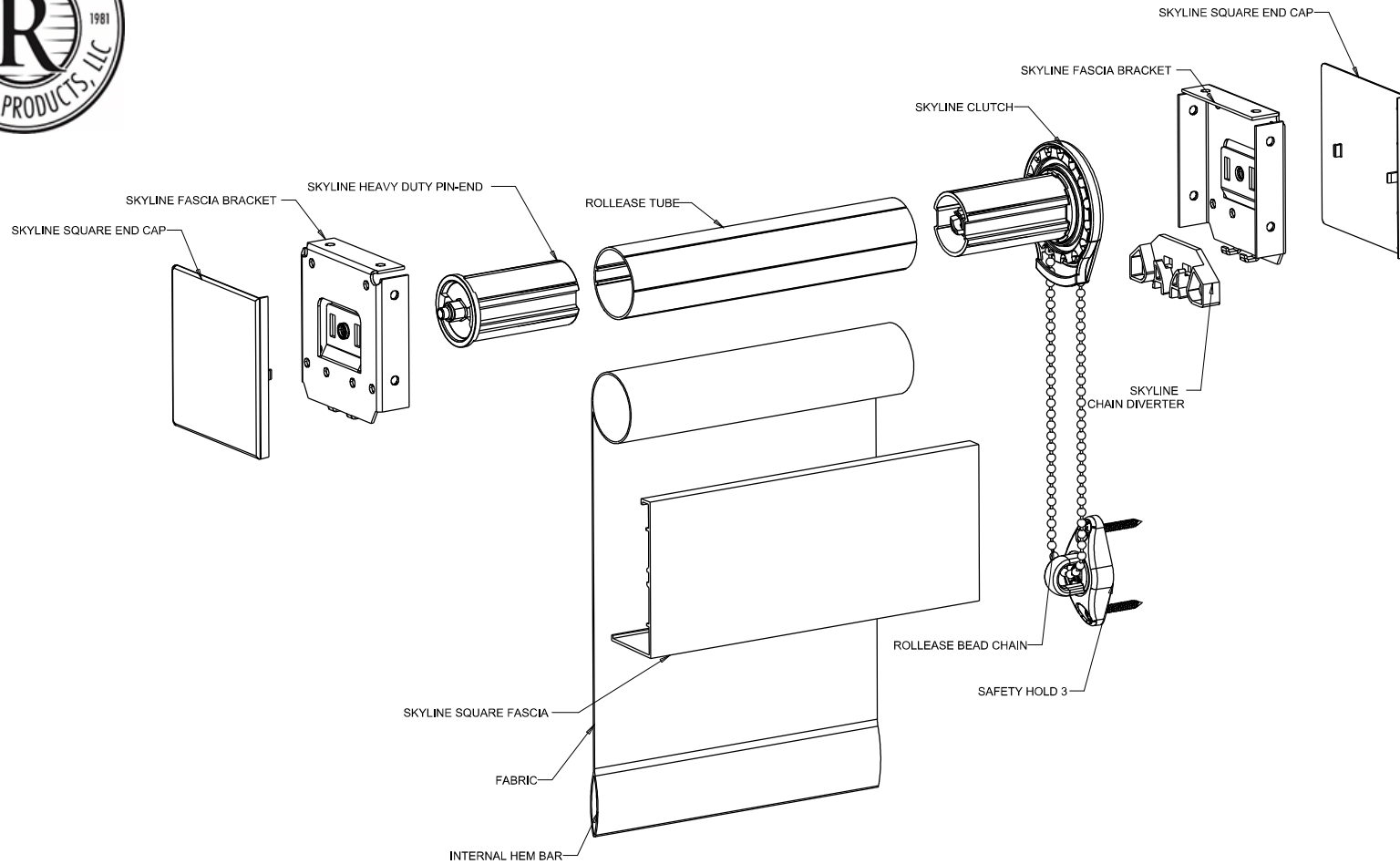
REFLECTED CEILING PLAN

# A201

© 2024 BarberMcMurry Architects



| REVISION RECORD |             |    |      |     |
|-----------------|-------------|----|------|-----|
| SYM             | DESCRIPTION | BY | DATE | CHK |



| TOLERANCES |       | INCHES              |       | MILLIMETERS |       |
|------------|-------|---------------------|-------|-------------|-------|
| XXX ±      | 0.015 | XXX ±               | 0.015 | XXX ±       | 0.015 |
| XXX ±      | 0.005 | XXX ±               | 0.005 | XXX ±       | 0.005 |
| ANG ±      | F     | ANG ±               | F     | ANG ±       | F     |
| 21FEB13    |       | D                   |       | 1/1         |       |
| JSG        |       | ASSY SKYLINE FASCIA |       | 1.6         |       |
| 002P044    |       | 1                   |       | 1           |       |

# Jumble

## Solar Screen Fabric

1% Openness

N002 White/Beige



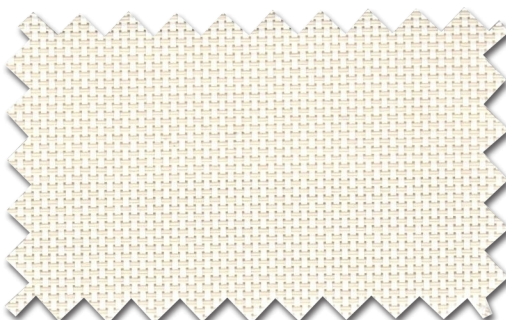
3% Openness

N002 White/Beige



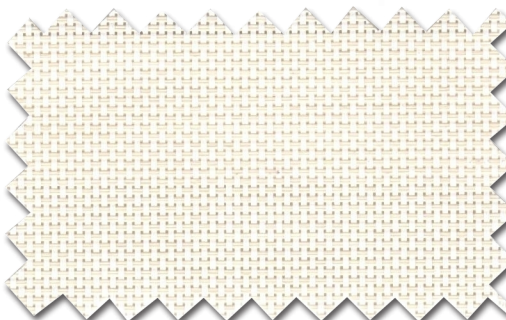
5% Openness

N002 White/Beige



10% Openness

N002 White/Beige



N001 White/White

N002 White/Beige

N003 White/Gray

N201 Beige/Beige

N203 Beige/Gray

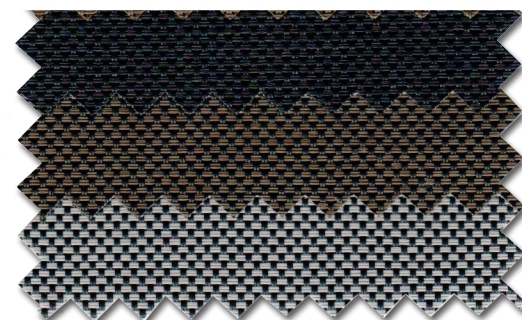
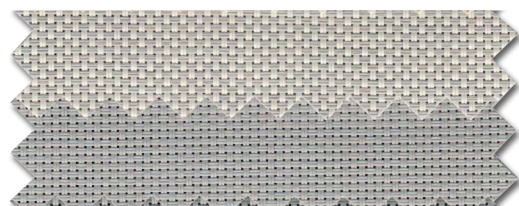
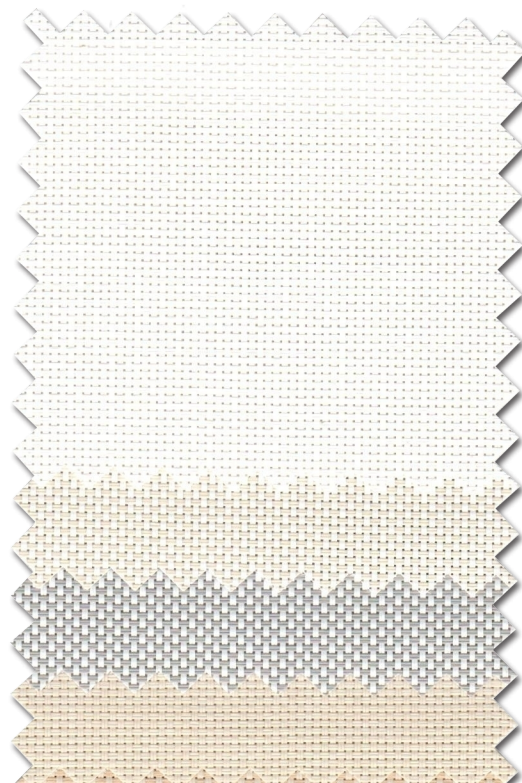
N301 Gray/Gray

N901 Charcoal/Charcoal

N902 Charcoal/Bronze

N903 Charcoal/Gray

Fabrics sampled on the right are 5% openness.



## COLOR RANGE

|                  | 1%  |     |      | 3%  |     |      | 5%  |     |      | 10% |     |      |
|------------------|-----|-----|------|-----|-----|------|-----|-----|------|-----|-----|------|
| Color            | 78" | 98" | 118" | 78" | 98" | 118" | 78" | 98" | 118" | 78" | 98" | 118" |
| N001 White/White | x   | x   | x    | x   | x   | x    | x   | x   | x    |     | x   | x    |
| N002 White/Beige | x   | x   | x    | x   | x   | x    | x   | x   | x    |     | x   | x    |
| N003 White/Gray  | x   | x   | x    | x   | x   | x    | x   | x   | x    |     | x   | x    |
| N201 Beige/Beige |     |     | x    |     | x   | x    | x   | x   | x    |     |     |      |
| N203 Beige/Gray  | x   | x   | x    | x   | x   | x    | x   | x   | x    |     |     |      |
| N301 Gray/Gray   |     | x   | x    | x   | x   | x    | x   | x   | x    |     |     |      |

|                        |   |   |   |   |   |   |   |   |   |  |   |   |
|------------------------|---|---|---|---|---|---|---|---|---|--|---|---|
| N901 Charcoal/Charcoal | x | x | x | x | x | x | x | x | x |  | x | x |
| N902 Charcoal/Bronze   |   | x | x | x | x | x | x | x | x |  |   |   |
| N903 Charcoal/Gray     |   | x | x | x | x | x | x | x | x |  |   |   |

## SPECIFICATIONS

|                         | 1%                             | 3%                             | 5%                             | 10%                            |
|-------------------------|--------------------------------|--------------------------------|--------------------------------|--------------------------------|
| Series                  | 3000 NET 1%                    | 3000 NET 3%                    | 3000 NET 5%                    | 3000 NET 10%                   |
| Composition             | 25% Polyester, 75% PVC         | 25% Polyester, 75% PVC         | 25% Polyester, 75% PVC         | 25% Polyester, 75% PVC         |
| Openness Factor         | Average 1%                     | Average 3%                     | Average 5%                     | Average 10%                    |
| Weight                  | 15.28 oz/yd2 (518 g/m2)        | 13.12 oz/yd2 (445 g/m2)        | 12.39 oz/yd2 (420 g/m2)        | 11.36 oz/yd2 (385 g/m2)        |
| Thickness               | 0.026 in (.68mm)               | 0.022 in (.57mm)               | 0.022 in (.55mm)               | 0.020 in (.52mm)               |
| Colorfastness           | Grade 8                        | Grade 8                        | Grade 8                        | Grade 8                        |
| Standard width*         | 98.4" (2.5m)                   | 98.4" (2.5m)                   | 98.4" (2.5m)                   | 98.4" (2.5m)                   |
| Standard length         | 33 yd/roll (30m)               | 33 yd/roll (30m)               | 33 yd/roll (30m)               | 33 yd/roll (30m)               |
| Fire Classifications    | NFPA 701, CA Title 19          | NFPA 701, CA Title 19          | NFPA 701, CA Title 19          | NFPA 701, CA Title 19          |
| Environmental Standards | Greenguard and Greenguard Gold | Greenguard and Greenguard Gold | Greenguard and Greenguard Gold | Greenguard and Greenguard Gold |

\* Standard fabrics available in 98.4" (2.5m) width. Limited selection available in 78.7" (2m) and 118" (3m) widths.

For complete technical information, current test results, performance specifications, or larger samples, please contact customer service.



Select Color of Fascia

You can also have shades without fascia with exposed roller material.

# Fascia Colors



White



Bronze



Clear  
Anodized



Black



Vanilla

Not available for Dual Roller With 5" Fascia, Only available for Single Rollers with 3" Fascia