

Window Treatment

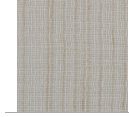
Blackout & Sheer Drapery - Living Room One Way Draw



Upholstery / Attached



T-400-a-WTF Living Room - Blackout Drapery Fabric
Qty Each: 0 Total Qty: 0



T-400-b-WTF Sheer Drapery Fabric
Qty Each: 0 Total Qty: 0

Total Qty: 35

Description	Blackout & Sheer Drapery - Living Room One Way Draw
Operation Method	Manually Direction Of Slide To Follow Same Direction As Balcony Sliding Door
Ceiling Height	8'-10" - VIF
Opening Size	8'-5"W x 6'-2"H - VIF
Finished Window Treatment Size	11'-10"W x 6'-10"H(Rod Height) - To Match Existing
Mounting Height	6'-10"H - VIF
Mounting Method	Wall Mount
Hardware/Finish	Existing Decorative Rod To Remain.
Panels Style	Ripple Fold
Panels Fixed or Operative	Operative
Panels Fullness	80%
Panels Finished Length	0.5" AFF
Sheers Style	Ripple Fold
Sheers Fullness	100%
Sheers Finished Length	0.75" AFF
COM	Panels: (Spec#T-400-a-WTF); P Kaufmann; Pattern: Merson Mod; Color:Custom; Sheers: (Spec# T-400-b- WTF); Richloom; Pattern:Tabriz; Color:Sand
Blackout Fabric Face Direction	Vertical Stripe Direction Pattern To Be Visible Inside The Unit
Blackout Fabric Face Direction	Vertical Stripe Direction Pattern To Be Visible Inside The Unit
Notes	

Window Treatment

- Site conditions & dimensions to be verified by field measurement prior to production.
- Any questions that arise about specifications in relation to field verification are to be brought to the designers attention for solution/approval.
- 48" clear acrylic wand mounted on the front of the leader. Provide ADA wand in ADA units that do not require motorization.
- Vertical pattern match at seams and both panels of window treatment. Place vertical seams behind pleats, never on the front side of a pleat.
- Bottom hem of sheers to include weights or beaded chain weight, stitched into place to prevent slippage and fully concealed.

Special Instructions:

Must meet or exceed WVO FF&E Performance Specifications - Q4 2022 - 62.0 WINDOW TREATMENT FABRICATION, DRAPERY AND SHEERS

Area / Room / #

Typical - [T]

Room Name / #	# of Rooms	Qty Room	Total
Unit Type B - 1 Bedroom Deluxe	35	1	35

Window Treatment Fabric

Living Room - Blackout Drapery Fabric



Total Qty: 0

Mfr to submit the followings:	<input checked="" type="checkbox"/> Cutting for Approval	<input checked="" type="checkbox"/> Flame Certification
Pattern	Merson MOD	
Color	Standard Label: Color	
Groundcloth	Victorious	
Width	54"W	
Repeat	H: 27" x V: 13.50"	
Direction	Vertical Stripe	
Content	100% FR Polyester	
Fire Rating	NFPA 701	
Finish/Treatment	N/A	
Cleaning Code	Dry-Clean Recommended, Machine wash or dry-clean for bedding, Water-Or Solvent-Based Spot Clean	
Notes	- CFA is required to be submitted for each separate dye lot.	

Special Instructions

Must meet or exceed WVO FF&E Performance Specifications - Q4 2022 - 38.0 FABRIC, WINDOW TREATMENT BLACKOUT
Must meet or exceed WVO FF&E Performance Specifications - Q4 2022 - 39.0 FABRIC, WINDOW TREATMENT FACE

Window Treatment Fabric

Sheer Drapery Fabric



Total Qty: 0

Mfr to submit the
followings:

- ☒ Cutting for Approval
- ☒ Flame Certification

Pattern	Tabriz
Color	Sand
Width	116"W
Repeat	N/A
Direction	Best Yield
Content	72% RECYCLED FR POLY, 28% FR POLY
Fire Rating	NFPA 701; IMO 7
Finish/Treatment	N/A
Cleaning Code	Spot clean only with a water-free dry cleaning solvent. Do not saturate. Do not use water.
Notes	- CFA is required to be submitted for each separate dye lot.

Mfr: Richloom Fabrics Group
NY United States
P: 212.685.5400

Jeff Ringer
C: 908-461-2694
jeffr@richloomfabrics.com

Special Instructions

Window Treatment

ADA Blackout & Sheer Drapery - Living Room One Way Draw



Upholstery / Attached



T-400-a-WTF Living Room - Blackout Drapery Fabric
Qty Each: 0 Total Qty: 0



T-400-b-WTF Sheer Drapery Fabric
Qty Each: 0 Total Qty: 0

Total Qty: 1

Description	ADA Blackout & Sheer Drapery - Living Room One Way Draw	Mfr: Eagle Contract 1001 Pamela Drive Euless, Texas 76040, United States P: 8174274854
Operating Hardware	Manual - Clear ADA looped baton 48" AFF	
Operating Method	Manually Direction Of Slide To Follow Same Direction As Balcony Sliding Door	
Ceiling Height	8'-10" - VIF	
Opening Size	8'-5"W x 6'-2"H - VIF	Vendor: Susan Curlee Inc. United States P: 407-770-7849 Cell www.susancurlee.com
Finished Window Treatment Size	11'-10"W x 6'-10"H(Rod Height) - To Match Existing	
Mounting Height	6'-10"H - VIF	
Mounting Method	Wall Mount	
Hardware/Finish	Existing Decorative Rod To Remain.	
Panels Style	Ripple Fold	
Panels Fixed or Operative	Operative	
Panels Fullness	80%	
Panels Finished Length	0.5" AFF	
Sheers Style	Ripple Fold	
Sheers Fullness	100%	
Sheers Finished Length	0.75" AFF	
COM	Panels: (Spec#T-400-a-WTF); P Kaufmann; Pattern: Merson Mod; Color:Custom; Sheers: (Spec# T-400-b-WTF); Richloom; Pattern:Tabriz; Color:Sand	
Blackout Fabric Face Direction	Vertical Stripe Direction Pattern To Be Visible Inside Unit	
Sheer Fabric Face Direction	Vertical Stripe Direction Pattern To Be Visible Inside Unit	
Notes		

Window Treatment

- Site conditions & dimensions to be verified by field measurement prior to production.
- Any questions that arise about specifications in relation to field verification are to be brought to the designers attention for solution/approval.
- 48" clear acrylic wand mounted on the front of the leader. Provide ADA wand in ADA units that do not require motorization.
- Vertical pattern match at seams and both panels of window treatment. Place vertical seams behind pleats, never on the front side of a pleat.
- Bottom hem of sheers to include weights or beaded chain weight, stitched into place to prevent slippage and fully concealed.

Special Instructions:

Must meet or exceed WVO FF&E Performance Specifications - Q4 2022 - 62.0 WINDOW TREATMENT FABRICATION, DRAPERY AND SHEERS

Area / Room / #

Typical - [T]

Room Name / #	# of Rooms	Qty Room	Total
Unit Type B ADA - 1 Bedroom Deluxe	1	1	1

Window Treatment Fabric

Living Room - Blackout Drapery Fabric



Total Qty: 0

Table with 2 columns: Property and Value. Rows include: Mfr to submit the followings: (with checkboxes for Cutting for Approval and Flame Certification), Pattern (Merson MOD), Color (Standard Label: Color), Groundcloth (Victorious), Width (54"W), Repeat (H: 27" x V: 13.50"), Direction (Vertical Stripe), Content (100% FR Polyester), Fire Rating (NFPA 701), Finish/Treatment (N/A), Cleaning Code (Dry-Clean Recommended, Machine wash or dry-clean for bedding, Water-Or Solvent-Based Spot Clean), and Notes (- CFA is required to be submitted for each separate dye lot).

Special Instructions

Must meet or exceed WVO FF&E Performance Specifications - Q4 2022 - 38.0 FABRIC, WINDOW TREATMENT BLACKOUT
Must meet or exceed WVO FF&E Performance Specifications - Q4 2022 - 39.0 FABRIC, WINDOW TREATMENT FACE

Window Treatment Fabric

Sheer Drapery Fabric



Total Qty: 0

Table with 3 columns: Specification, Value, and Manufacturer/Contact Info. Rows include: Mfr to submit the followings: (with checkboxes for Cutting for Approval and Flame Certification), Pattern (Tabriz), Color (Sand), Width (116"W), Repeat (N/A), Direction (Best Yield), Content (72% RECYCLED FR POLY, 28% FR POLY), Fire Rating (NFPA 701; IMO 7), Finish/Treatment (N/A), Cleaning Code (Spot clean only with a water-free dry cleaning solvent. Do not saturate. Do not use water.), and Notes (- CFA is required to be submitted for each separate dye lot).

Special Instructions

Window Treatment

Blackout & Sheer Drapery - Living Room One Way Draw



Upholstery / Attached



T-400-a-WTF Living Room - Blackout Drapery Fabric
Qty Each: 0 Total Qty: 0



T-400-b-WTF Sheer Drapery Fabric
Qty Each: 0 Total Qty: 0

Total Qty: 34

Description	Blackout & Sheer Drapery - Living Room One Way Draw
Operating Method	Manually Direction Of Slide To Follow Same Direction As Balcony Sliding Door
Ceiling Height	8'-10" - VIF
Window Opening Size	8'-9"W x 6'-6"H - VIF
Finished Window Treatment Size	12'-4"W x 7'-4"H(Rod Height) - To Match Existing
Mounting Method	Wall Mount
Mounting Height	7'-4"H - VIF
Hardware/Finish	Existing Decorative Rod To Remain.
Panels Style	Ripple Fold
Panels Fixed or Operative	Operative
Panels Fullness	80%
Panels Finished Length	0.5" AFF
Sheers Style	Ripple Fold
Sheers Fullness	100%
Sheers Finished Length	0.75" AFF
COM	Panels: (Spec#T-401-WTF); P Kaufmann; Pattern: Merson Mod; Color:Custom; Sheers: (Spec# T-400-WTF); Richloom; Pattern:Tabriz; Color:Sand
Blackout Fabric Face Direction	Vertical Stripe Direction Pattern To Be Visible Inside The Unit
Sheer Fabric Face Direction	Vertical Stripe Direction Pattern To Be Visible Inside The Unit
Notes	

Mfr: Eagle Contract
1001 Pamela Drive
Euless, Texas 76040, United States
P: 8174274854

Brandi Lightfoot
brandi@eaglecontract.com

Vendor: Susan Curlee Inc.
United States
P: 407-770-7849 Cell
www.susancurlee.com

Susan Curlee Varga
C: 407-770-7849
susan.curlee@gmail.com

Window Treatment

- Site conditions & dimensions to be verified by field measurement prior to production.
- Any questions that arise about specifications in relation to field verification are to be brought to the designers attention for solution/approval.
- 48" clear acrylic wand mounted on the front of the leader. Provide ADA wand in ADA units that do not require motorization.
- Vertical pattern match at seams and both panels of window treatment. Place vertical seams behind pleats, never on the front side of a pleat.
- Bottom hem of sheers to include weights or beaded chain weight, stitched into place to prevent slippage and fully concealed.

Special Instructions:

Must meet or exceed WVO FF&E Performance Specifications - Q4 2022 - 62.0 WINDOW TREATMENT FABRICATION, DRAPERY AND SHEERS

Area / Room / #

Typical - [T]

Room Name / #	# of Rooms	Qty Room	Total
[T] Unit Type A - 2 Bedroom Deluxe	34	1	34

Window Treatment Fabric

Living Room - Blackout Drapery Fabric



Total Qty: 0

Table with 2 columns: Specification/Requirement and Value/Detail. Rows include: Mfr to submit the followings (with checkboxes for Cutting for Approval and Flame Certification), Pattern (Merson MOD), Color (Standard Label: Color), Groundcloth (Victorious), Width (54"W), Repeat (H: 27" x V: 13.50"), Direction (Vertical Stripe), Content (100% FR Polyester), Fire Rating (NFPA 701), Finish/Treatment (N/A), Cleaning Code (Dry-Clean Recommended, Machine wash or dry-clean for bedding, Water-Or Solvent-Based Spot Clean), and Notes (- CFA is required to be submitted for each separate dye lot).

Special Instructions

Must meet or exceed WVO FF&E Performance Specifications - Q4 2022 - 38.0 FABRIC, WINDOW TREATMENT BLACKOUT
Must meet or exceed WVO FF&E Performance Specifications - Q4 2022 - 39.0 FABRIC, WINDOW TREATMENT FACE

Window Treatment Fabric

Sheer Drapery Fabric



Total Qty: 0

Mfr to submit the followings:	<input checked="" type="checkbox"/> Cutting for Approval	<input checked="" type="checkbox"/> Flame Certification
Pattern	Tabriz	Mfr: Richloom Fabrics Group
Color	Sand	NY United States
Width	116"W	P: 212.685.5400
Repeat	N/A	Jeff Ringer
Direction	Best Yield	C: 908-461-2694
Content	72% RECYCLED FR POLY, 28% FR POLY	jeffr@richloomfabrics.com
Fire Rating	NFPA 701; IMO 7	
Finish/Treatment	N/A	
Cleaning Code	Spot clean only with a water-free dry cleaning solvent. Do not saturate. Do not use water.	
Notes	- CFA is required to be submitted for each separate dye lot.	

Special Instructions

Window Treatment

ADA - Blackout & Sheer Drapery - Living Room One Way Draw



Upholstery / Attached



T-400-a-WTF Living Room - Blackout Drapery Fabric
Qty Each: 0 Total Qty: 0



T-400-b-WTF Sheer Drapery Fabric
Qty Each: 0 Total Qty: 0

Total Qty: 2

Description	Blackout & Sheer Drapery - Living Room One Way Draw	Mfr: Eagle Contract 1001 Pamela Drive Euless, Texas 76040, United States P: 8174274854
Operating Method	Manually Direction Of Slide To Follow Same Direction As Balcony Sliding Door	
Operating Pull	ADA baton/pull	Brandi Lightfoot brandi@eaglecontract.com
Ceiling Height	8'-10" - VIF	
Finished Window Treatment Size	12'-4"W x 7'-4"H(Rod Height) - To Match Existing	Vendor: Susan Curlee Inc. United States P: 407-770-7849 Cell www.susancurlee.com
Window Opening Size	8'-9"W x 6'-6"H - VIF	
Mounting Height	7'-4"H - VIF	
Mounting Method	Wall Mount	Susan Curlee Varga C: 407-770-7849 susan.curlee@gmail.com
Hardware/Finish	Existing Decorative Rod To Remain.	
Panels Style	Ripple Fold	
Panels Fixed or Operative	Operative	
Panels Fullness	80%	
Panels Finished Length	0.5" AFF	
Sheers Style	Ripple Fold	
Sheers Fullness	100%	
Sheers Finished Length	0.75" AFF	
COM	Panels: (Spec#T-401-WTF); P Kaufmann; Pattern: Merson Mod; Color:Custom; Sheers: (Spec# T-400-WTF); Richloom; Pattern:Tabriz; Color:Sand	
Blackout Fabric Face Direction	Vertical Stripe Direction Pattern To Be Visible Inside The Unit	
Sheer Fabric Face Direction	Vertical Stripe Direction Pattern To Be Visible Inside The Unit	
Notes		

Window Treatment

- Site conditions & dimensions to be verified by field measurement prior to production.
- Any questions that arise about specifications in relation to field verification are to be brought to the designers attention for solution/approval.
- 48" clear acrylic wand mounted on the front of the leader. Provide ADA wand in ADA units that do not require motorization.
- Vertical pattern match at seams and both panels of window treatment. Place vertical seams behind pleats, never on the front side of a pleat.
- Bottom hem of sheers to include weights or beaded chain weight, stitched into place to prevent slippage and fully concealed.

Special Instructions:

Must meet or exceed WVO FF&E Performance Specifications - Q4 2022 - 62.0 WINDOW TREATMENT FABRICATION, DRAPERY AND SHEERS

Area / Room / #

Typical - [T]

Room Name / #	# of Rooms	Qty Room	Total
Unit Type A ADA - 2 Bedroom Deluxe	2	1	2

Window Treatment Fabric

Living Room - Blackout Drapery Fabric



Total Qty: 0

Mfr to submit the followings:	<input checked="" type="checkbox"/> Cutting for Approval	<input checked="" type="checkbox"/> Flame Certification
Pattern	Merson MOD	
Color	Standard Label: Color	
Groundcloth	Victorious	
Width	54"W	
Repeat	H: 27" x V: 13.50"	
Direction	Vertical Stripe	
Content	100% FR Polyester	
Fire Rating	NFPA 701	
Finish/Treatment	N/A	
Cleaning Code	Dry-Clean Recommended, Machine wash or dry-clean for bedding, Water-Or Solvent-Based Spot Clean	
Notes	- CFA is required to be submitted for each separate dye lot.	

Special Instructions

Must meet or exceed WVO FF&E Performance Specifications - Q4 2022 - 38.0 FABRIC, WINDOW TREATMENT BLACKOUT
Must meet or exceed WVO FF&E Performance Specifications - Q4 2022 - 39.0 FABRIC, WINDOW TREATMENT FACE

Window Treatment Fabric

Sheer Drapery Fabric



Total Qty: 0

Mfr to submit the
followings:

- ☒ Cutting for Approval ☒ Flame Certification

Pattern	Tabriz
Color	Sand
Width	116"W
Repeat	N/A
Direction	Best Yield
Content	72% RECYCLED FR POLY, 28% FR POLY
Fire Rating	NFPA 701; IMO 7
Finish/Treatment	N/A
Cleaning Code	Spot clean only with a water-free dry cleaning solvent. Do not saturate. Do not use water.
Notes	- CFA is required to be submitted for each separate dye lot.

Mfr: Richloom Fabrics Group
NY United States
P: 212.685.5400

Jeff Ringer
C: 908-461-2694
jeffr@richloomfabrics.com

Special Instructions

Window Treatment

Dual Roman Shade - Living Room Suite



Upholstery / Attached



T-401-a-WTF	Living Room Suite - Blackout Drapery Fabric		
Qty Each:	0	Total Qty:	0
T-401-b-WTF	Sheer Drapery Fabric		
Qty Each:	0	Total Qty:	0

Total Qty: 70

Mfr to submit the
followings:

☒ Finish Sample

☒ Prototype

Description	Dual Roman Shade - Living Room Suite
Opening Size	2'-7"W x 4'-10"H, Sill: 24"H VIF
Ceiling Height	8-6""H VIF
Shade Style	Hobbled
Mounting Method	Outside (Match Existing Mounting Height-VIF)
Fabric Face	Sheer To Be Closest To Window
Finished Shade Size	TBD - Extend 1.5-2" Past All Openings
Lining Required	No
Operation	Manual
Valance Required	Yes - Wooden Valance
Valance Length/Drop	4"H - To Match Baseboard Style & Paint Color PPG Moth Gray Semi gloss PT003
Shade Fabric Direction	Up the Bolt - Vertical Stripes
Shade Fabric	(Spec# T-401-a-WTF); (P Kaufmann); Pattern: Merson; Color: Custom
Sheer Fabric	(Spec# T-401-b-WTF); (Richloom); Pattern: Tabriz; Color: Sand
Notes	<ul style="list-style-type: none"> - Photo Prototype is required. - Site conditions & dimensions to be verified by field measurement prior to production. - Any questions that arise about specifications in relation to field verification are to be brought to the designers attention for solution/approval. - Fabricator to verify all C.O.M. quantities.

Mfr: Eagle Contract
1001 Pamela Drive
Euless, Texas 76040, United States
P: 8174274854

Brandi Lightfoot
brandi@eaglecontract.com

Vendor: Susan Curlee Inc.
United States
P: 407-770-7849 Cell
www.susancurlee.com

Susan Curlee Varga
C: 407-770-7849
susan.curlee@gmail.com

Special Instructions:

Must meet or exceed WVO FF&E Performance Specifications - Q4 2022 - 63.0 WINDOW TREATMENT, HARDWARE AND INSTALLATION
Must meet or exceed WVO FF&E Performance Specifications - Q4 2022 - 59.0 WINDOW TREATMENT, ROMAN SHADE

Window Treatment

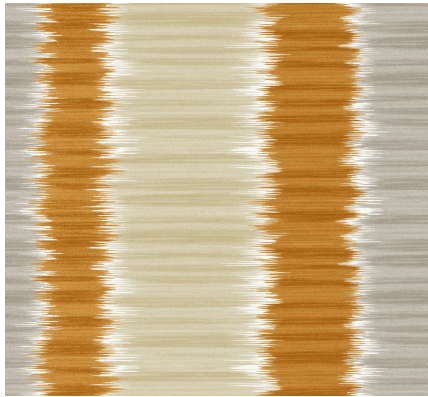
Area / Room / #

Typical - [T]

Room Name / #	# of Rooms	Qty Room	Total
Unit Type C - 1 Bedroom Suite	35	2	70

Window Treatment Fabric

Living Room Suite - Blackout Drapery
Fabric



Total Qty: 0

Mfr to submit the
followings:
[checked] Cutting for Approval
[checked] Flame Certification

Table with 2 columns: Property and Value. Rows include Pattern (Merson MOD), Color (Standard Label: Color), Groundcloth (Victorious), Width (54"W), Repeat (H: 27" x V: 13.50"), Direction (Vertical Stripe), Content (100% FR Polyester), Fire Rating (NFPA 701), Finish/Treatment (N/A), Cleaning Code (Dry-Clean Recommended, Machine wash or dry-clean for bedding, Water-Or Solvent-Based Spot Clean), and Notes (- CFA is required to be submitted for each separate dye lot).

Special Instructions

Must meet or exceed WVO FF&E Performance Specifications - Q4 2022 - 38.0 FABRIC, WINDOW TREATMENT BLACKOUT
Must meet or exceed WVO FF&E Performance Specifications - Q4 2022 - 39.0 FABRIC, WINDOW TREATMENT FACE

Window Treatment Fabric

Sheer Drapery Fabric



Total Qty: 0

Mfr to submit the
followings:

- ☒ Cutting for Approval
- ☒ Flame Certification

Pattern	Tabriz
Color	Sand
Width	116"W
Repeat	N/A
Direction	Best Yield
Content	72% RECYCLED FR POLY, 28% FR POLY
Fire Rating	NFPA 701; IMO 7
Finish/Treatment	N/A
Cleaning Code	Spot clean only with a water-free dry cleaning solvent. Do not saturate. Do not use water.
Notes	- CFA is required to be submitted for each separate dye lot.

Mfr: Richloom Fabrics Group
NY United States
P: 212.685.5400

Jeff Ringer
C: 908-461-2694
jeffr@richloomfabrics.com

Special Instructions

Window Treatment

ADA Dual Roman Shade - Living Room Suite



Upholstery / Attached



T-401-a-WTF Living Room Suite - Blackout Drapery

Fabric

Qty Each: 0 Total Qty: 0



T-401-b-WTF Sheer Drapery Fabric

Qty Each: 0 Total Qty: 0

Total Qty: 2

Mfr to submit the
followings:

☒ Finish Sample

☒ Prototype

Description	ADA - Motorized Dual Roman Shade - Living Room Suite
Opening Size	Window 1: 2'-7"W x 4'-10"H, Sill: 24"H VIF Window 2: 2'-7"W x 4'-10"H, Sill: 24"H VIF
Ceiling Height	8-6"H VIF
Shade Style	Hobbled
Mounting Method	Outside (Match Existing Mounting Height-VIF)
Fabric Direction	Sheer Closest To Window
Finished Shade Size	TBD - Extend 1.5-2" Past All Openings
Lining Required	No
Lining Type / Color	Blackout - Victorious Basecloth
Operation	Motorized - Battery Operated
Valance Required	Yes - Wooden Valance
Valance Length/Drop	6"H - To Match Baseboard Style & Paint Color (Valance to House Battery For Motorization)
Shade Fabric Direction	Up the Bolt - Vertical Stripes
Shade Fabric	(Spec# T-401-a-WTF); (P Kaufmann); Pattern: Merson; Color: Custom
Sheer Fabric	(Spec# T-401-b-WTF); (Richloom); Pattern: Tabriz; Color: Sand
Notes	- Photo Prototype is required. - Site conditions & dimensions to be verified by field measurement prior to production. - Any questions that arise about specifications in relation to field verification are to be brought to the designers attention for solution/approval. - Fabricator to verify all C.O.M. quantities.

Mfr: Eagle Contract
1001 Pamela Drive
Euless, Texas 76040, United States
P: 8174274854

Brandi Lightfoot
brandi@eaglecontract.com

Vendor: Susan Curlee Inc.
United States
P: 407-770-7849 Cell
www.susancurlee.com

Susan Curlee Varga
C: 407-770-7849
susan.curlee@gmail.com

Special Instructions:

Must meet or exceed WVO FF&E Performance Specifications - Q4 2022 - 63.0 WINDOW TREATMENT, HARDWARE AND INSTALLATION
Must meet or exceed WVO FF&E Performance Specifications - Q4 2022 - 59.0 WINDOW TREATMENT, ROMAN SHADE

Window Treatment

Area / Room / #

Typical - [T]

Room Name / #	# of Rooms	Qty Room	Total
Unit Type C ADA - 1 Bedroom Suite	1	2	2

Window Treatment Fabric

Living Room Suite - Blackout Drapery
Fabric



Total Qty: 0

Mfr to submit the
followings:
[checked] Cutting for Approval
[checked] Flame Certification

Table with 2 columns: Property and Value. Rows include Pattern (Merson MOD), Color (Standard Label: Color), Groundcloth (Victorious), Width (54"W), Repeat (H: 27" x V: 13.50"), Direction (Vertical Stripe), Content (100% FR Polyester), Fire Rating (NFPA 701), Finish/Treatment (N/A), Cleaning Code (Dry-Clean Recommended, Machine wash or dry-clean for bedding, Water-Or Solvent-Based Spot Clean), and Notes (- CFA is required to be submitted for each separate dye lot).

Special Instructions

Must meet or exceed WVO FF&E Performance Specifications - Q4 2022 - 38.0 FABRIC, WINDOW TREATMENT BLACKOUT
Must meet or exceed WVO FF&E Performance Specifications - Q4 2022 - 39.0 FABRIC, WINDOW TREATMENT FACE

Window Treatment Fabric

Sheer Drapery Fabric



Total Qty: 0

Mfr to submit the followings:	<input checked="" type="checkbox"/> Cutting for Approval	<input checked="" type="checkbox"/> Flame Certification
Pattern	Tabriz	Mfr: Richloom Fabrics Group
Color	Sand	NY United States
Width	116"W	P: 212.685.5400
Repeat	N/A	Jeff Ringer
Direction	Best Yield	C: 908-461-2694
Content	72% RECYCLED FR POLY, 28% FR POLY	jeffr@richloomfabrics.com
Fire Rating	NFPA 701; IMO 7	
Finish/Treatment	N/A	
Cleaning Code	Spot clean only with a water-free dry cleaning solvent. Do not saturate. Do not use water.	
Notes	- CFA is required to be submitted for each separate dye lot.	

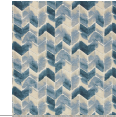
Special Instructions

Window Treatment

Blackout & Sheer Drapery - Master Room Center Draw



Upholstery / Attached



T-402-a-WTF Master Bedroom - Blackout Drapery
Fabric

Qty Each: 0 Total Qty: 0



T-402-b-WTF Sheer Drapery Fabric - Master Bedroom

Qty Each: 0 Total Qty: 0

Total Qty: 69

Description	Blackout & Sheer Drapery - Bedroom Center Draw
Ceiling Height	8'-6" VIF
Opening Size	Large Window: 4'-6"W x 5'-0"H - VIF
Sill Height	1'-11"H
Mounting Method	Wall Mount Above Opening
Mounting Height	7'-2"H - VIF (to match existing height)
Hardware/Finish	Existing Decorative Rod To Remain.
Panels Style	Ripple Fold
Panels Fixed or Operative	Operative
Black-out Style Name/#	Blackout Pattern Vertically - Pattern to face interior Livingroom Sheer Pattern To Run Vertically - Fabric to be closest to window
Panels Fullness	80%
Panels Finished Length	0.5" AFF
Sheers Style	Ripple Fold
Sheers Fullness	100%
Sheers Finished Length	0.75" AFF
COM	Panels: (Spec#T-402-a-WTF); P Kaufmann; Pattern: Beech; Color:Indigo ; Sheers: (Spec# T-402-b-WTF); Richloom; Pattern: Tabriz; Color:Sand

Mfr: Eagle Contract
1001 Pamela Drive
Euless, Texas 76040, United States
P: 8174274854

Brandi Lightfoot
brandi@eaglecontract.com

Vendor: Susan Curlee Inc.
United States
P: 407-770-7849 Cell
www.susancurlee.com

Susan Curlee Varga
C: 407-770-7849
susan.curlee@gmail.com

Notes

Window Treatment

- Site conditions & dimensions to be verified by field measurement prior to production.
- Any questions that arise about specifications in relation to field verification are to be brought to the designers attention for solution/approval.
- 48" clear acrylic wand mounted on the front of the leader. Provide ADA wand in ADA units that do not require motorization.
- Vertical pattern match at seams and both panels of window treatment. Place vertical seams behind pleats, never on the front side of a pleat.
- Bottom hem of sheers to include weights or beaded chain weight, stitched into place to prevent slippage and fully concealed.

Special Instructions:

Must meet or exceed WVO FF&E Performance Specifications - Q4 2022 - 62.0 WINDOW TREATMENT FABRICATION, DRAPERY AND SHEERS

Area / Room / #

Typical - [T]

Room Name / #	# of Rooms	Qty Room	Total
[T] Unit Type A - 2 Bedroom Deluxe	34	1	34
Unit Type B - 1 Bedroom Deluxe	35	1	35

Window Treatment Fabric

Master Bedroom - Blackout Drapery
Fabric



Total Qty: 0

Mfr to submit the
followings:
[checked] Cutting for Approval
[checked] Flame Certification

Table with 2 columns: Property (Pattern, Color, Groundcloth, Width, Repeat, Direction, Content, Fire Rating, Finish/Treatment, Cleaning Code, Notes) and Value (PAL, Beech, Victorious, 54"W, H: 13.50" x V: 9", Up the Bolt, 100% POLYESTER (57% POLYESTER Polyester 43% RECYCLED POLYESTER), CAL TB 117-2013, NFPA 701, IMO UPHOLSTERY PART 8, N/A, Machine wash or dry-clean for bedding, Water-Or Solvent-Based Spot Clean, - CFA is required to be submitted for each separate dye lot.)

Mfr: PKaufmann Contract Fabric
3 Park Avenue
New York , NY 10016, United States
P: 1.212.292.2200
Chris Neff
P: 305-254-2522 C: 305-773-0578
cneff@pkcontract.com

Special Instructions

Must meet or exceed WVO FF&E Performance Specifications - Q4 2022 - 38.0 FABRIC, WINDOW TREATMENT BLACKOUT
Must meet or exceed WVO FF&E Performance Specifications - Q4 2022 - 39.0 FABRIC, WINDOW TREATMENT FACE

Window Treatment Fabric

Sheer Drapery Fabric - Master Bedroom



Total Qty: 0

Mfr to submit the followings:	<input checked="" type="checkbox"/> Cutting for Approval	<input checked="" type="checkbox"/> Flame Certification
Pattern	Tabriz	Mfr: Richloom Fabrics Group
Color	Sand	NY United States
Width	116"W	P: 212.685.5400
Repeat	N/A	Jeff Ringer
Direction	Best Yield	C: 908-461-2694
Content	72% RECYCLED FR POLY, 28% FR POLY	jeffr@richloomfabrics.com
Fire Rating	NFPA 701; IMO 7	
Finish/Treatment	N/A	
Cleaning Code	Spot clean only with a water-free dry cleaning solvent. Do not saturate. Do not use water.	
Notes	- CFA is required to be submitted for each separate dye lot.	

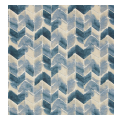
Special Instructions

Window Treatment

Blackout & Sheer Drapery - Side Window Master Room Center Draw



Upholstery / Attached



T-402-a-WTF Master Bedroom - Blackout Drapery
Fabric

Qty Each: 0 Total Qty: 0



T-402-b-WTF Sheer Drapery Fabric - Master Bedroom

Qty Each: 0 Total Qty: 0

Total Qty: 34

Description	Blackout & Sheer Drapery - Bedroom Center Draw
Ceiling Height	8'-6" VIF
Opening Size	Side Window : 2'-6"W x 5'-0"H - VIF
Sill Height	1'-11"H
Mounting Method	Wall Mount Above Opening
Mounting Height	7'-2"H - VIF (to match existing height)
Hardware/Finish	Existing Decorative Rod To Remain.
Fabric Direction	Blackout Pattern To Run Vertically. Blackout to face living room Sheer Pattern To Run Vertically. Sheer Closest To Window
Panels Style	Ripple Fold
Panels Fixed or Operative	Operative
Panels Fullness	80%
Panels Finished Length	0.5" AFF
Sheers Style	Ripple Fold
Sheers Fullness	100%
Sheers Finished Length	0.75" AFF
COM	Panels: (Spec#T-402-a-WTF); P Kaufmann; Pattern: Beech; Color:Indigo ; Sheers: (Spec# T-402-b-WTF); Richloom; Pattern: Tabriz; Color:Sand

Mfr: Eagle Contract
1001 Pamela Drive
Euless, Texas 76040, United States
P: 8174274854

Brandi Lightfoot
brandi@eaglecontract.com

Vendor: Susan Curlee Inc.
United States
P: 407-770-7849 Cell
www.susancurlee.com

Susan Curlee Varga
C: 407-770-7849
susan.curlee@gmail.com

Notes

Window Treatment

- Site conditions & dimensions to be verified by field measurement prior to production.
- Any questions that arise about specifications in relation to field verification are to be brought to the designers attention for solution/approval.
- 48" clear acrylic wand mounted on the front of the leader. Provide ADA wand in ADA units that do not require motorization.
- Vertical pattern match at seams and both panels of window treatment. Place vertical seams behind pleats, never on the front side of a pleat.
- Bottom hem of sheers to include weights or beaded chain weight, stitched into place to prevent slippage and fully concealed.

Special Instructions:

Must meet or exceed WVO FF&E Performance Specifications - Q4 2022 - 62.0 WINDOW TREATMENT FABRICATION, DRAPERY AND SHEERS

Area / Room / #

Typical - [T]

Room Name / #	# of Rooms	Qty Room	Total
[T] Unit Type A - 2 Bedroom Deluxe	34	1	34

Window Treatment Fabric

Master Bedroom - Blackout Drapery
Fabric



Total Qty: 0

Mfr to submit the
followings:
[checked] Cutting for Approval [checked] Flame Certification

Table with 2 columns: Property and Value. Rows include Pattern (PAL), Color (Beech), Groundcloth (Victorious), Width (54"W), Repeat (H: 13.50" x V: 9"), Direction (Up the Bolt), Content (100% POLYESTER), Fire Rating (CAL TB 117-2013), Finish/Treatment (N/A), Cleaning Code (Machine wash or dry-clean), and Notes (- CFA is required to be submitted for each separate dye lot.).

Mfr: PKaufmann Contract Fabric
3 Park Avenue
New York , NY 10016, United States
P: 1.212.292.2200
Chris Neff
P: 305-254-2522 C: 305-773-0578
cneff@pkcontract.com

Special Instructions

Must meet or exceed WVO FF&E Performance Specifications - Q4 2022 - 38.0 FABRIC, WINDOW TREATMENT BLACKOUT
Must meet or exceed WVO FF&E Performance Specifications - Q4 2022 - 39.0 FABRIC, WINDOW TREATMENT FACE

Window Treatment Fabric

Sheer Drapery Fabric - Master Bedroom



Total Qty: 0

Table with 3 columns: Property, Value, and Manufacturer/Contact Info. Rows include: Mfr to submit the followings (with checkboxes for Cutting for Approval and Flame Certification), Pattern (Tabriz), Color (Sand), Width (116"W), Repeat (N/A), Direction (Best Yield), Content (72% RECYCLED FR POLY, 28% FR POLY), Fire Rating (NFPA 701; IMO 7), Finish/Treatment (N/A), Cleaning Code (Spot clean only with a water-free dry cleaning solvent. Do not saturate. Do not use water.), and Notes (- CFA is required to be submitted for each separate dye lot).

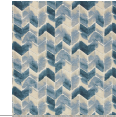
Special Instructions

Window Treatment

ADA Blackout & Sheer Drapery - Master Room Center Draw



Upholstery / Attached



T-402-a-WTF Master Bedroom - Blackout Drapery
Fabric

Qty Each: 0 Total Qty: 0



T-402-b-WTF Sheer Drapery Fabric - Master Bedroom

Qty Each: 0 Total Qty: 0

Total Qty: 3

Description	ADA Blackout & Sheer Drapery - Bedroom Center Draw
Operational Hardware	Clear ADA looped baton 48" AFF
Ceiling Height	8'-6" VIF
Opening Size	Large Window: 4'-6"W x 5'-0"H - VIF
Sill Height	1'-11"H
Mounting Method	Wall Mount Above Opening
Mounting Height	7'-2"H - VIF (to match existing height)
Hardware/Finish	Existing Decorative Rod To Remain.
Panels Style	Ripple Fold
Panels Fixed or Operative	Operative
Fabric Direction	Blackout Pattern Vertically - Pattern to face interior Livingroom Sheer Pattern To Run Vertically - Fabric to be closest to window
Panels Fullness	80%
Panels Finished Length	0.5" AFF
Sheers Style	Ripple Fold
Sheers Fullness	100%
Sheers Finished Length	0.75" AFF
COM	Panels: (Spec#T-402-a-WTF); P Kaufmann; Pattern: Beech; Color:Indigp; Sheers: (Spec# T-402-b-WTF); Richloom; Pattern: Tabriz; Color:Sand

Mfr: Eagle Contract
1001 Pamela Drive
Euless, Texas 76040, United States
P: 8174274854

Brandi Lightfoot
brandi@eaglecontract.com

Vendor: Susan Curlee Inc.
United States
P: 407-770-7849 Cell
www.susancurlee.com

Susan Curlee Varga
C: 407-770-7849
susan.curlee@gmail.com

Notes

Window Treatment

- Site conditions & dimensions to be verified by field measurement prior to production.
- Any questions that arise about specifications in relation to field verification are to be brought to the designers attention for solution/approval.
- 48" clear acrylic wand mounted on the front of the leader. Provide ADA wand in ADA units that do not require motorization.
- Vertical pattern match at seams and both panels of window treatment. Place vertical seams behind pleats, never on the front side of a pleat.
- Bottom hem of sheers to include weights or beaded chain weight, stitched into place to prevent slippage and fully concealed.

Special Instructions:

Must meet or exceed WVO FF&E Performance Specifications - Q4 2022 - 62.0 WINDOW TREATMENT FABRICATION, DRAPERY AND SHEERS

Area / Room / #

Typical - [T]

Room Name / #	# of Rooms	Qty Room	Total
Unit Type A ADA - 2 Bedroom Deluxe	2	1	2
Unit Type B ADA - 1 Bedroom Deluxe	1	1	1

Window Treatment Fabric

Master Bedroom - Blackout Drapery
Fabric



Total Qty: 0

Mfr to submit the
followings:

- Cutting for Approval
Flame Certification

Table with 2 columns: Property (Pattern, Color, Groundcloth, Width, Repeat, Direction, Content, Fire Rating, Finish/Treatment, Cleaning Code, Notes) and Value (PAL, Beech, Victorious, 54"W, H: 13.50" x V: 9", Up the Bolt, 100% POLYESTER (57% POLYESTER Polyester 43% RECYCLED POLYESTER), CAL TB 117-2013, NFPA 701, IMO UPHOLSTERY PART 8, N/A, Machine wash or dry-clean for bedding, Water-Or Solvent-Based Spot Clean, - CFA is required to be submitted for each separate dye lot.)

Mfr: PKaufmann Contract Fabric
3 Park Avenue
New York , NY 10016, United States
P: 1.212.292.2200
Chris Neff
P: 305-254-2522 C: 305-773-0578
cneff@pkcontract.com

Special Instructions

Must meet or exceed WVO FF&E Performance Specifications - Q4 2022 - 38.0 FABRIC, WINDOW TREATMENT BLACKOUT
Must meet or exceed WVO FF&E Performance Specifications - Q4 2022 - 39.0 FABRIC, WINDOW TREATMENT FACE

Window Treatment Fabric

Sheer Drapery Fabric - Master Bedroom



Total Qty: 0

Mfr to submit the followings:	<input checked="" type="checkbox"/> Cutting for Approval	<input checked="" type="checkbox"/> Flame Certification
Pattern	Tabriz	Mfr: Richloom Fabrics Group
Color	Sand	NY United States
Width	116"W	P: 212.685.5400
Repeat	N/A	Jeff Ringer
Direction	Best Yield	C: 908-461-2694
Content	72% RECYCLED FR POLY, 28% FR POLY	jeffr@richloomfabrics.com
Fire Rating	NFPA 701; IMO 7	
Finish/Treatment	N/A	
Cleaning Code	Spot clean only with a water-free dry cleaning solvent. Do not saturate. Do not use water.	
Notes	- CFA is required to be submitted for each separate dye lot.	

Special Instructions

Window Treatment

ADA Blackout & Sheer Drapery - Side Window Master Room Center Draw



Upholstery / Attached



T-402-a-WTF Master Bedroom - Blackout Drapery Fabric

Qty Each: 0 Total Qty: 0



T-402-b-WTF Sheer Drapery Fabric - Master Bedroom

Qty Each: 0 Total Qty: 0

Total Qty: 2

Description	ADA Blackout & Sheer Drapery - Side Window Bedroom Center Draw
Operational Hardware	Clear ADA looped baton 48" AFF
Ceiling Height	8'-6" VIF
Opening Size	Large Window: 2'-6"W x 5'-0"H - VIF
Sill Height	1'-11"H
Mounting Method	Wall Mount Above Opening
Mounting Height	7'-2"H - VIF (to match existing height)
Hardware/Finish	Existing Decorative Rod To Remain.
Panels Style	Ripple Fold
Panels Fixed or Operative	Operative
Fabric Direction	Blackout Pattern Vertically - Pattern to face interior Livingroom Sheer Pattern To Run Vertically - Fabric to be closest to window
Panels Fullness	80%
Panels Finished Length	0.5" AFF
Sheers Style	Ripple Fold
Sheers Fullness	100%
Sheers Finished Length	0.75" AFF
COM	Panels: (Spec#T-402-a-WTF); P Kaufmann; Pattern: Beech; Color:Indigp; Sheers: (Spec# T-402-b-WTF); Richloom; Pattern: Tabriz; Color:Sand

Notes

Mfr: Eagle Contract
1001 Pamela Drive
Euless, Texas 76040, United States
P: 8174274854

Brandi Lightfoot
brandi@eaglecontract.com

Vendor: Susan Curlee Inc.
United States
P: 407-770-7849 Cell
www.susancurlee.com

Susan Curlee Varga
C: 407-770-7849
susan.curlee@gmail.com

Window Treatment

- Site conditions & dimensions to be verified by field measurement prior to production.
- Any questions that arise about specifications in relation to field verification are to be brought to the designers attention for solution/approval.
- 48" clear acrylic wand mounted on the front of the leader. Provide ADA wand in ADA units that do not require motorization.
- Vertical pattern match at seams and both panels of window treatment. Place vertical seams behind pleats, never on the front side of a pleat.
- Bottom hem of sheers to include weights or beaded chain weight, stitched into place to prevent slippage and fully concealed.

Special Instructions:

Must meet or exceed WVO FF&E Performance Specifications - Q4 2022 - 62.0 WINDOW TREATMENT FABRICATION, DRAPERY AND SHEERS

Area / Room / #

Typical - [T]

Room Name / #	# of Rooms	Qty Room	Total
Unit Type A ADA - 2 Bedroom Deluxe	2	1	2

Window Treatment Fabric

Master Bedroom - Blackout Drapery
Fabric



Total Qty: 0

Mfr to submit the
followings:

- Cutting for Approval
Flame Certification

Table with 2 columns: Property (Pattern, Color, Groundcloth, Width, Repeat, Direction, Content, Fire Rating, Finish/Treatment, Cleaning Code, Notes) and Value (PAL, Beech, Victorious, 54"W, H: 13.50" x V: 9", Up the Bolt, 100% POLYESTER (57% POLYESTER Polyester 43% RECYCLED POLYESTER), CAL TB 117-2013, NFPA 701, IMO UPHOLSTERY PART 8, N/A, Machine wash or dry-clean for bedding, Water-Or Solvent-Based Spot Clean, - CFA is required to be submitted for each separate dye lot).

Mfr: PKaufmann Contract Fabric
3 Park Avenue
New York , NY 10016, United States
P: 1.212.292.2200
Chris Neff
P: 305-254-2522 C: 305-773-0578
cneff@pkcontract.com

Special Instructions

Must meet or exceed WVO FF&E Performance Specifications - Q4 2022 - 38.0 FABRIC, WINDOW TREATMENT BLACKOUT
Must meet or exceed WVO FF&E Performance Specifications - Q4 2022 - 39.0 FABRIC, WINDOW TREATMENT FACE

Window Treatment Fabric

Sheer Drapery Fabric - Master Bedroom



Total Qty: 0

Mfr to submit the followings:	<input checked="" type="checkbox"/> Cutting for Approval	<input checked="" type="checkbox"/> Flame Certification
Pattern	Tabriz	Mfr: Richloom Fabrics Group
Color	Sand	NY United States
Width	116"W	P: 212.685.5400
Repeat	N/A	Jeff Ringer
Direction	Best Yield	C: 908-461-2694
Content	72% RECYCLED FR POLY, 28% FR POLY	jeffr@richloomfabrics.com
Fire Rating	NFPA 701; IMO 7	
Finish/Treatment	N/A	
Cleaning Code	Spot clean only with a water-free dry cleaning solvent. Do not saturate. Do not use water.	
Notes	- CFA is required to be submitted for each separate dye lot.	

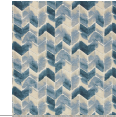
Special Instructions

Window Treatment

Dual Roman Shade - Master Bedroom Suite



Upholstery / Attached



T-403-a-WTF Master Bedroom - Blackout Roman Shade Fabric
Qty Each: 0 Total Qty: 0



T-403-b-WTF Sheer Roman Shade Fabric - Master Bedroom
Qty Each: 0 Total Qty: 0

Total Qty: 0

Mfr to submit the followings:

☒ Finish Sample

☒ Prototype

Description	Dual Roman Shade - Master Bedroom Suite
Opening Size	Window 1: 4'-5"W x 4'-10"H, Sill: 1'-8"H VIF
Ceiling Height	8'-6"H VIF
Shade Style	Hobbled
Mounting Method	Outside (Match Existing Mounting Height-VIF)
Finished Shade Size	TBD - Extend 1.5-2" Past All Openings
Lining Required	No
Lining Type / Color	Blackout - Victorious Basecloth
Operation	Manual
Valance Required	Yes - Wooden Valance
Valance Length/Drop	4"H - To Match Baseboard Style & Paint Color
Shade Fabric Direction	Up the Bolt - Vertical Stripes
Shade Fabric	(Spec# T-403-a-WTF); (P Kaufmann); Pattern: Inkling; Color: Beech
Sheer Fabric	(Spec# T-403-b-WTF); (Richloom); Pattern: Tabriz; Color: Sand
Notes	<ul style="list-style-type: none"> - Photo Prototype is required. - Site conditions & dimensions to be verified by field measurement prior to production. - Any questions that arise about specifications in relation to field verification are to be brought to the designers attention for solution/approval. - Fabricator to verify all C.O.M. quantities.

Mfr: Eagle Contract
1001 Pamela Drive
Eules, Texas 76040, United States
P: 8174274854

Brandi Lightfoot
brandi@eaglecontract.com

Vendor: Susan Curlee Inc.
United States
P: 407-770-7849 Cell
www.susancurlee.com

Susan Curlee Varga
C: 407-770-7849
susan.curlee@gmail.com

Special Instructions:

Must meet or exceed WVO FF&E Performance Specifications - Q4 2022 - 63.0 WINDOW TREATMENT, HARDWARE AND INSTALLATION
Must meet or exceed WVO FF&E Performance Specifications - Q4 2022 - 59.0 WINDOW TREATMENT, ROMAN SHADE

Window Treatment

Area / Room / #

Typical - [T]

Room Name / #	# of Rooms	Qty Room	Total
Unit Type C - 1 Bedroom Suite	35	0	0

Window Treatment Fabric

Master Bedroom - Blackout Roman
Shade Fabric



Total Qty: 0

Mfr to submit the
followings:

- Cutting for Approval
Flame Certification

Table with 2 columns: Property (Pattern, Color, Groundcloth, Width, Repeat, Direction, Content, Fire Rating, Finish/Treatment, Cleaning Code, Notes) and Value (PAL, Beech, Victorious, 54"W, H: 13.50" x V: 9", Up the Bolt, 100% POLYESTER (57% POLYESTER Polyester 43% RECYCLED POLYESTER), CAL TB 117-2013, NFPA 701, IMO UPHOLSTERY PART 8, N/A, Machine wash or dry-clean for bedding, Water-Or Solvent-Based Spot Clean, - CFA is required to be submitted for each separate dye lot.)

Special Instructions

Must meet or exceed WVO FF&E Performance Specifications - Q4 2022 - 38.0 FABRIC, WINDOW TREATMENT BLACKOUT
Must meet or exceed WVO FF&E Performance Specifications - Q4 2022 - 39.0 FABRIC, WINDOW TREATMENT FACE

Window Treatment Fabric

Sheer Roman Shade Fabric - Master Bedroom



Total Qty: 0

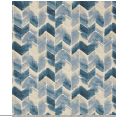
Table with 2 columns: Property and Value. Rows include: Mfr to submit the followings (with checkboxes for Cutting for Approval and Flame Certification), Pattern (Tabriz), Color (Sand), Width (116"W), Repeat (N/A), Direction (Best Yield), Content (72% RECYCLED FR POLY, 28% FR POLY), Fire Rating (NFPA 701; IMO 7), Finish/Treatment (N/A), Cleaning Code (Spot clean only with a water-free dry cleaning solvent. Do not saturate. Do not use water.), and Notes (- CFA is required to be submitted for each separate dye lot).

Special Instructions

Window Treatment

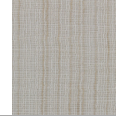
ADA Dual Roman Shade - Master Bedroom Suite

Upholstery / Attached



T-403-a-WTF Master Bedroom - Blackout Roman
Shade Fabric

Qty Each: 0 Total Qty: 0



T-403-b-WTF Sheer Roman Shade Fabric - Master
Bedroom

Qty Each: 0 Total Qty: 0

Total Qty: 1

Mfr to submit the
followings:

☒ Finish Sample

☒ Prototype

Description ADA - Motorized Dual Roman Shade - Master Bedroom
Suite

Opening Size Window 1: 4'-6"W x 4'-10"H, Sill: 1'-8"H VIF

Ceiling Height 8'-6"H VIF

Shade Style Hobbled

Mounting Method Outside (Match Existing Mounting Height-VIF)

Finished Shade Size TBD - Extend 1.5-2" Past All Openings

Lining Required No

Lining Type / Color Blackout - Victorious Basecloth

Operation Motorized - Battery Operated

Valance Required Yes - Wooden Valance

Valance Length/Drop 6"H - To Match Baseboard Style & Paint Color (Valance
to House Battery For Motorization)

Shade Fabric Direction Up the Bolt - Vertical Stripes

Shade Fabric (Spec# T-403-a-WTF); (P Kaufmann); Pattern: Inkling;
Color: Beech

Sheer Fabric (Spec# T-403-b-WTF); (Richloom); Pattern: Tabriz; Color:
Sand

Notes - Photo Prototype is required.
- Site conditions & dimensions to be verified by field
measurement prior to production.
- Any questions that arise about specifications in
relation to field verification are to be brought to the
designers attention for solution/approval.
- Fabricator to verify all C.O.M. quantities.

Mfr: Eagle Contract
1001 Pamela Drive
Eules, Texas 76040, United States
P: 8174274854

Brandi Lightfoot
brandi@eaglecontract.com

Vendor: Susan Curlee Inc.
United States
P: 407-770-7849 Cell
www.susancurlee.com

Susan Curlee Varga
C: 407-770-7849
susan.curlee@gmail.com

Special Instructions:

Must meet or exceed WVO FF&E Performance Specifications - Q4 2022 - 63.0 WINDOW TREATMENT, HARDWARE AND INSTALLATION

Must meet or exceed WVO FF&E Performance Specifications - Q4 2022 - 59.0 WINDOW TREATMENT, ROMAN SHADE

Window Treatment

Area / Room / #

Typical - [T]

Room Name / #	# of Rooms	Qty Room	Total
Unit Type C ADA - 1 Bedroom Suite	1	1	1

Window Treatment Fabric

Master Bedroom - Blackout Roman
Shade Fabric



Total Qty: 0

Mfr to submit the
followings:
[checked] Cutting for Approval [checked] Flame Certification

Table with 2 columns: Property and Value. Rows include Pattern (PAL), Color (Beech), Groundcloth (Victorious), Width (54"W), Repeat (H: 13.50" x V: 9"), Direction (Up the Bolt), Content (100% POLYESTER (57% POLYESTER Polyester 43% RECYCLED POLYESTER)), Fire Rating (CAL TB 117-2013, NFPA 701, IMO UPHOLSTERY PART 8), Finish/Treatment (N/A), Cleaning Code (Machine wash or dry-clean for bedding, Water-Or Solvent-Based Spot Clean), and Notes (- CFA is required to be submitted for each separate dye lot).

Special Instructions

Must meet or exceed WVO FF&E Performance Specifications - Q4 2022 - 38.0 FABRIC, WINDOW TREATMENT BLACKOUT
Must meet or exceed WVO FF&E Performance Specifications - Q4 2022 - 39.0 FABRIC, WINDOW TREATMENT FACE

Window Treatment Fabric

Sheer Roman Shade Fabric - Master Bedroom



Total Qty: 0

Mfr to submit the
followings:
[checked] Cutting for Approval [checked] Flame Certification

Table with 2 columns: Property and Value. Rows include Pattern (Tabriz), Color (Sand), Width (116"W), Repeat (N/A), Direction (Best Yield), Content (72% RECYCLED FR POLY, 28% FR POLY), Fire Rating (NFPA 701; IMO 7), Finish/Treatment (N/A), Cleaning Code (Spot clean only with a water-free dry cleaning solvent. Do not saturate. Do not use water.), and Notes (- CFA is required to be submitted for each separate dye lot).

Special Instructions

Window Treatment

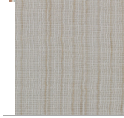
Dual Roman Shade - Guest Bedroom



Upholstery / Attached



T-404-a-WTF Guest Bedroom - Blackout Cornice Fabric
Qty Each: 0 Total Qty: 0



T-404-b-WTF Sheer Drapery Fabric - Guest Bedroom
Qty Each: 0 Total Qty: 0

Total Qty: 72

Mfr to submit the
followings:

☒ Finish Sample

☒ Prototype

Description	Dual Roman Shade - Guest Bedroom
Opening Size	3'-10"W x 2'-10"H, Sill: 4'-0"H VIF
Ceiling Height	8'-6"H VIF
Shade Style	Hobbled
Mounting Method	Outside (Match Existing Mounting Height-VIF)
Finished Shade Size	TBD - Extend 1.5-2" Past All Openings
Lining Required	No
Lining Type / Color	Blackout - Victorious Basecloth
Operation	Manual
Valance Required	Yes - Wooden Valance
Valance Length/Drop	4"H - To Match Baseboard Style & Paint Color
Shade Fabric Direction	Up the Bolt - Vertical Stripes
Shade Fabric	(Spec# T-404-a-WTF); (P Kaufmann); Pattern: VCT Antoine - Mesa Verde
Sheer Fabric	(Spec# T-404-b-WTF); (Richloom); Pattern: Tabriz; Color: Sand
Notes	<ul style="list-style-type: none"> - Photo Prototype is required. - Site conditions & dimensions to be verified by field measurement prior to production. - Any questions that arise about specifications in relation to field verification are to be brought to the designers attention for solution/approval. - Fabricator to verify all C.O.M. quantities.

Mfr: Eagle Contract
1001 Pamela Drive
Eules, Texas 76040, United States
P: 8174274854

Brandi Lightfoot
brandi@eaglecontract.com

Vendor: Susan Curlee Inc.
United States
P: 407-770-7849 Cell
www.susancurlee.com

Susan Curlee Varga
C: 407-770-7849
susan.curlee@gmail.com

Special Instructions:

Must meet or exceed WVO FF&E Performance Specifications - Q4 2022 - 63.0 WINDOW TREATMENT, HARDWARE AND INSTALLATION
Must meet or exceed WVO FF&E Performance Specifications - Q4 2022 - 59.0 WINDOW TREATMENT, ROMAN SHADE

Window Treatment			
Area / Room / #			
Typical - [T]			
Room Name / #	# of Rooms	Qty Room	Total
Unit Type A ADA - 2 Bedroom Deluxe	2	2	4
[T] Unit Type A - 2 Bedroom Deluxe	34	2	68

Window Treatment Fabric

Guest Bedroom - Blackout Cornice
Fabric



Total Qty: 0

Table with 2 columns: Property and Value. Rows include: Mfr to submit the followings: (with checkboxes for Cutting for Approval and Flame Certification), Pattern (VCT ANTOINE), Color (Mesa Verde), Groundcloth (Victorious), Width (54"W), Repeat (H: 27" x V: 13.50"), Direction (Up the Bolt), Content (100% Polyester), Fire Rating (NFPA 701, IMO DRAPERY PART 7), Finish/Treatment (N/A), Cleaning Code (Dry-Clean Recommended), Notes (- CFA is required to be submitted for each separate dye lot).

Special Instructions

Must meet or exceed WVO FF&E Performance Specifications - Q4 2022 - 38.0 FABRIC, WINDOW TREATMENT BLACKOUT
Must meet or exceed WVO FF&E Performance Specifications - Q4 2022 - 39.0 FABRIC, WINDOW TREATMENT FACE

Window Treatment Fabric

Sheer Drapery Fabric - Guest Bedroom



Total Qty: 0

Mfr to submit the
followings:

- ☒ Cutting for Approval
- ☒ Flame Certification

Pattern	Tabriz	Mfr: Richloom Fabrics Group NY United States P: 212.685.5400
Color	Sand	
Width	116"W	
Repeat	N/A	
Direction	Best Yield	
Content	72% RECYCLED FR POLY, 28% FR POLY	
Fire Rating	NFPA 701; IMO 7	
Finish/Treatment	N/A	
Cleaning Code	Spot clean only with a water-free dry cleaning solvent. Do not saturate. Do not use water.	
Notes	- CFA is required to be submitted for each separate dye lot.	

Special Instructions