

Project: 2025 AC OLR River Island Condo IV Bldg 81000 - Standard Unit Renovation Phase 2
 Association: Orange Lake Country Club Villas Condominium Association IV, Inc.
 Resort: Orange Lake Resort
 Address: 8505 W. Irlo Bronson Memorial Highway, Kissimmee, FL 34747
 Item: King Bedskirt (ADA)
 Location: ADA Master Bedroom

HICV FF&E Spec. No.:
SU-MB-703
 Issue Date: 11/28/2023
 Revision(s):

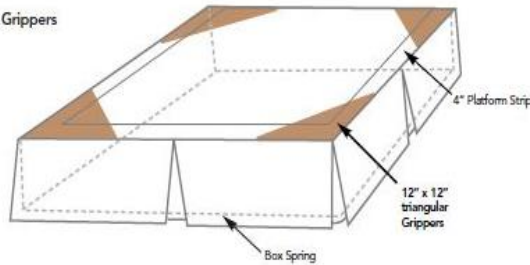
BEDDING

Designer: Erin Warner		Email: EWarner@holidayinnclub.com		Phone: (407) 395-6731	
Unit Type Bldg. 81000	Qty. Per Unit:	Total Units:	Sub-Total:	Grand Total : 4	
2 Bedroom		60	0		
2 Bedroom ADA Units	1	4	4		
3 Bedroom		16	0		
				Total Cost : \$ 87.50	

Unit Numbers (for install): Floors 1 - 4; ADA Units - 81107; 81123; 81125; 81207
 Manufacturer: Read Window Products
 Contact: Harris Gorab
 Email: hgstriker@aol.com
 Phone: (813) 391-8567

Product Image:

Bed Skirt with Grippers



COM Fabric Information
 Fabric Spec No.: FB-08
 Yardage Per Item: 5
 Manufacturer: Samelson Chatelane
 Pattern / Color: Thailand/Seaglass
 Width: 54"
 Repeat: None



Description: King Bedskirt (ADA)
Style: Five inverted pleats - One centered on each side, one centered on foot and one at each bottom corner
 Each pleat apex shall have reinforced stitching to help prevent tears
Dimensions: 78"W x 80"L x 15"H
Foundation Size: 78"W x 80"L x 9"H
Bed Base Height: 7.5"H
Construction: Platform top with 4" face fabric strips sewn all around perimeter's top with mitered and serged corners
 12" triangular huggers/grippers shall be stitched into the corners of the bedskirt to hold the skirt in place
Lining: N/A
Decking: Pre-shrunk 56/44 white poly / cotton
Thread: 100% Polyester to match fabric
Stitching: Single needle lock stitch, do not use chain stitch, 7 to 9 per inch
Seaming: If seamed, the seam must be concealed in the pleat, not in the center of the pleat where it would be visible
Pattern Match: Yes
Tolerance: 1/2" on each side of product
Sample Approval: Production sample required prior to production start-up for aesthetic and proper-fit approval
Lead Time: 6 - 8 Weeks from receipt of PO
Ship To: FF&E Warehouse TBD
Other: Passes CAL 117 & NFPA 701
 Machine Washable
Notes: Manufacturer is responsible for notifying the designer of any issues that may arise during production.
 Boxes to be labeled with spec number.
 Label all covers with size.
 Cartoning included in pricing.
 Fabrication / Production must meet or exceed Holiday Inn Club Vacations FF&E Performance Standards

Items Required for Designer Approval Prior to Fabrication:

- CFA FINISH FLAME CERTIFICATE PROTOTYPE SEAMING SHOP DRAWINGS STRIKE OFF

Holiday Inn Club Vacations INCORPORATED

Project: 2025 AC OLR River Island Condo IV Bldg 81000 - Standard Unit Renovation Phase 2
 Association: Orange Lake Country Club Villas Condominium Association IV, Inc.
 Resort: Orange Lake Resort
 Address: 8505 W. Irlo Bronson Memorial Highway, Kissimmee, FL 34747
 Item: Dual Roller Shade
 Location: Guest Bedroom - GB

HICV FF&E Spec. No.:

SU-GB-409

Issue Date: 11/28/2023

Revision(s): (REV.2)3/21/2024

Designer: Erin Warner

Email: EWarner@holidayinnclub.com

Phone: (407) 395-6731

Unit Type Bldg. 81000	Qty. Per Unit:	Total Units:	Sub-Total:	Grand Total :	64
2 Bedroom	1	64	64	*Installation includes dual roller shade. Manufacture Cost : Refer to PO Install Cost : Refer to PO Total Cost : Refer to PO	
3 Bedroom		16	0		

Unit Numbers (for install): Floors 1 - 4

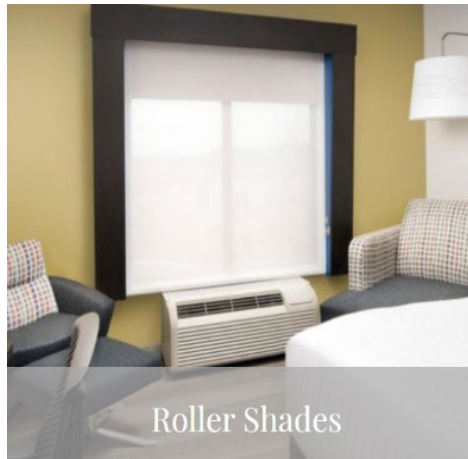
Manufacturer: Read Window Products

Email: hgstriker@aol.com

Contact: Harris Gorab

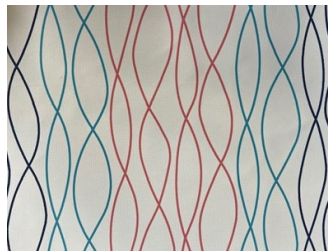
Phone: (813) 391-8567

Concept Image:



Roller Shades

Included Fabric Information Sheer
 Fabric Spec No.: Reference Only - Fabric Included
 Yardage Per Item: As Required
 Manufacturer: Culp
 Pattern / Color: Custom HS045 Squiggle / Bermuda
 Base Cloth: Print on screen fabric; Jumble 5%
 Width: 118"W
 Repeat: 21.75"H x 36"V



COM Fabric Information Blackout
 Fabric Spec No.: Reference Only - Fabric Included
 Yardage Per Item: As Required
 Manufacturer: Culp
 Pattern / Color: Meridian / Frost
 Width: 118" W
 Repeat: N/A



Style: Custom dual manual roller shade with fascia on top and side channels. Sheer will hang in front and the blackout fabric behind next to the window. - Inside window mounted.

Dimension: 72"W x 62"H

Black-out Fabric: Meridian / Polar

Content: 100% Polyester with acrylic coating

Openness: Blackout

Width: 118"W

Fire Class: NFPA 701; CA Title 19

Blackout Placement: Back Against Window

Blackout Hem: Sealed Hem

Sheer Fabric: HS045 Squiggle / Bermuda / Jumble 5%

Content: 25% Polyester; 75% PVC

Openness: 5%

Width: 118"W

Bacterial Resistant: N/A

Inherent Flame Resistance: Yes

Fire Class:

Finish:

Microbial Resistant: N/A

Sheer Placement: Front In the Room

Sheer Hem: Sealed Hem

Hardware: N/A

Operation: Both shades - regular roll

Clutch: Plastic clutch - white

Chain: Stainless Steel

Fascia: White

Side Channel: Yes

Bottom Channel: No

Channel/Fascia Color: White

Mounting: Inside Window Mount

Notes: All seams to be overlapped stitching; All seams pattern matched

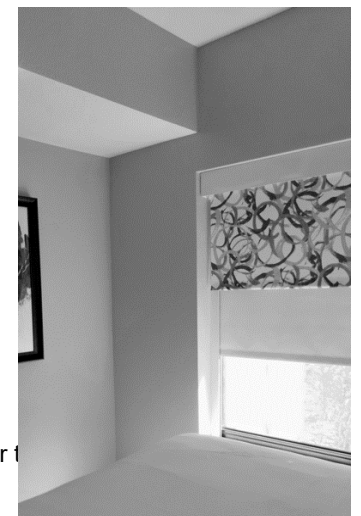
Specified drapery installation to be site verified by the installer, installer to advise the designer of any issues prior to

All draperies to be labeled with size and HICV FF&E Spec No.

Fabrication / Production must meet or exceed Holiday Inn Club Vacations FF&E Performance Standards

Items Required for Designer Approval Prior to Fabrication:

- CFA FINISH FLAME CERTIFICATE PROTOTYPE SEAMING SHOP DRAWINGS STRIKE OFF



WINDOW TREATMENTS

Project: 2025 AC OLR River Island Condo IV Bldg 81000 - Standard Unit Renovation Phase 2
 Association: Orange Lake Country Club Villas Condominium Association IV, Inc.
 Resort: Orange Lake Resort
 Address: 8505 W. Irlo Bronson Memorial Highway, Kissimmee, FL 34747
 Item: Dual Roller Shade
 Location: Guest Bedroom - 3BR Units

HICV FF&E Spec. No.:

SU-GB-410

Issue Date: 11/28/2023
 Revision(s): (REV.2)3/21/2024

Designer: Erin Warner

Email: EWarner@holidayinnclub.com

Phone: (407) 395-6731

Unit Type Bldg. 81000	Qty. Per Unit:	Total Units:	Sub-Total:	Grand Total :	16
2 Bedroom		64	0		
3 Bedroom	1	16	16		
				*Installation includes dual roller shade.	
				Manufacture Cost : Refer to PO	
				Install Cost : Refer to PO	
				Total Cost : Refer to PO	

Unit Numbers (for install): Floors 1 - 4

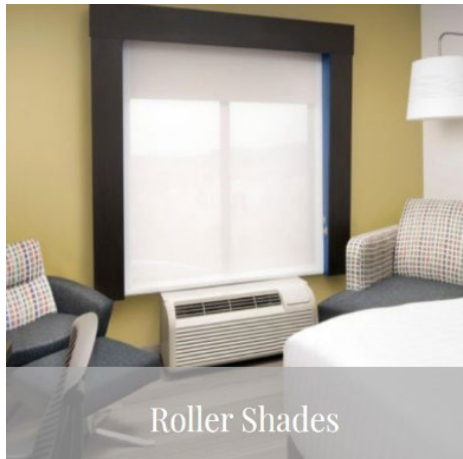
Manufacturer: Read Window Products

Email: hgstriker@aol.com

Contact: Harris Gorab

Phone: (813) 391-8567

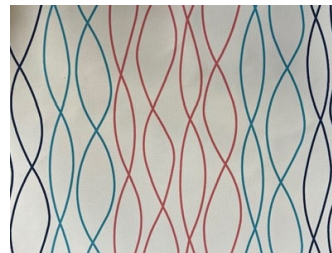
Concept Image:



Roller Shades

Included Fabric Information Sheer
 Fabric Spec No.: Reference Only - Fabric Included
 Yardage Per It: As Required
 Manufacturer: Culp
 Pattern / Color Custom HS045 Squiggle / Bermuda
 Base Cloth: Print on screen fabric; Jumble 5%
 Width: 118"W
 Repeat: 21.75"H x 36"V

COM Fabric Information Blackout
 Fabric Spec No.: Reference Only - Fabric Included
 Yardage Per Item: As Required
 Manufacturer: Culp
 Pattern / Color: Meridian / Frost
 Width: 118" W
 Repeat: N/A



Style: Custom dual manual roller shade with fascia on top and side channels. Sheer will hang in front and the blackout fabric behind next to the window. - Inside window mounted.

Dimension: 36"W x 62"H

Black-out Fabric: Meridian / Polar

Content: 100% Polyester with acrylic coating

Openness: Blackout

Width: 118"W

Fire Class: NFPA 701; CA Title 19

Blackout Placement: Back Against Window

Blackout Hem: Sealed Hem

Sheer Fabric: HS045 Squiggle / Bermuda / Jumble 5%

Content: 25% Polyester; 75% PVC

Openness: 5%

Width: 118"W

Bacterial Resistant: N/A

Inherent Flame Resistance: Yes

Fire Class:

Finish:

Microbial Resistant: N/A

Sheer Placement: Front In the Room

Sheer Hem: Sealed Hem

Hardware: N/A

Operation: Both shades - regular roll

Clutch: Plastic clutch - white

Chain: Stainless Steel

Fascia: White

Side Channel: Yes

Bottom Channel: No

Channel/Fascia Color: White

Mounting: Inside Window Mount

Notes: All seams to be overlapped stitching; All seams pattern matched

Specified drapery installation to be site verified by the installer, installer to advise the designer of any issues prior to fabrication.

All draperies to be labeled with size and HICV FF&E Spec No.

Fabrication / Production must meet or exceed Holiday Inn Club Vacations FF&E Performance Standards

Items Required for Designer Approval Prior to Fabrication:

- CFA FINISH FLAME CERTIFICATE PROTOTYPE SEAMING SHOP DRAWINGS STRIKE OFF

