



QUOTATION

Quote No. 39486 I rev.

Baja Window Shading S. de R.L. de C.V.

Calle Camino Vecinal, # 5051
Col. Benito Juarez, C.P.22706
Playas de Rosarito, B.C., México.
Mex. Phone: +52 (664) 406-4229
USA Phone: 1 (619) 576-6826

Billing Information

Di Calabria Industries Inc.
9927 Via de la Amistad
San Diego, CA 92154
Contact: Yukiu Peralta
Phone: (619) 941-2700

US Receiving and Shipping Warehouse

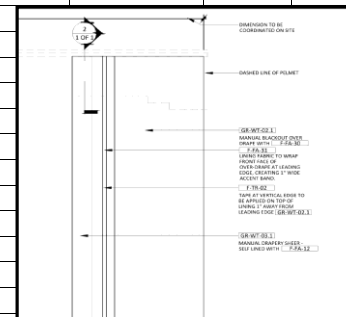
Ruffo de Alba Forwarders, LP
9927 Via de la Amistad Business Park
San Diego, CA 92154
Contact: Pamela Vera
Phone: (619) 591-9391

TO: JUSTIN DAVID TEXTILES
Contact: WENDY DESCHENE

Project Name: **NOMAD DETROIT - SUITES FULL PROD.**
Project Location: **Detroit, Michigan.**

Today's Date: 06-Nov-25
Quote valid until: 05-Jan-26

Item	Qty	UOM	Description	Face Yds. Req. Each	I.D. Window and/or Area	Rod Size	Finished Length	Price EA	Total
1	3	PR	RIPPLEFOLD LINED DRAPERY (BATON OPERATED)	21.80	SUITES	108.000	133.000	\$ 224.90	\$ 674.70
	1	PR	SIZES: SEE COLUMNS FOR SIZES	13.10	SUITES	56.000	133.000	\$ 137.60	\$ 137.60
			STYLE: LINED RIPPLEFOLD @ 200 % FULLNESS. 1.5 INCHES HEAD SIZE. WITH TRIM AT THE LEADING EDGES (1 INCH OF LINING TO BE TURNED TO BE VISIBLE ON FRONT AT LEADING EDGE OF DRAPERY).						
			HEMS: DOUBLE TURNED BLINDSTITCHED HEMS. 4 INCHES BOTTOM HEMS, 1.5 INCHES SIDE HEMS. WITH LEAD WEIGHTS AT CORNERS & SEAMS.						
			MOUNT: CEILING MOUNT						
			HARDWARE: SEE ITEM No. 3						
			CONTROL: SEE ITEM No. 3						
			FABRIC: C.O.M. / ERICA SHAMROCK TEXTILES / CIRCA / CUSTOM / 54 GOODS (F-FA-30 MAIN FABRIC).						
			TRIM: COM / ARISTOTLE GREEK KEY / CUSTOM WHITE-JLUM / 1-3/8" (PREMADE TAPE TRIM)						
			INTERLINING: PROVIDED BY B.W.S. / 3-PASS BO, WW, 110" / 110 GOODS .						
			LINING: C.O.M. / PANAZ / GEMINI REVERSIBLE BO / 437 TUSCAN RED / 110". (F-FA-31 LINING).						
			<div><div>F-FA-30</div><div>F-FA-31</div><div>TRIM</div></div>						
Total Item 1 =									\$ 812.30
2	3	PR	RIPPLEFOLD SHEER SELF LINED DRAPERY (BATON OPERATED)	22.20	SUITES	108.000	133.000	\$ 83.60	\$ 250.80
	1	PR	SIZES: SEE COLUMNS FOR SIZES	13.40	SUITES	56.000	133.000	\$ 53.00	\$ 53.00
			STYLE: RIPPLEFOLD @ 220 % FULLNESS. 1.5 INCHES HEAD SIZE						
			HEMS: DOUBLE TURNED BLINDSTITCHED HEMS. 4 INCHES BOTTOM HEMS, PILLOW CASED SEWING, LOCKSTITCHED 1.5 INCHES SIDE HEMS WITH LEAD WEIGHTS AT CORNERS						
			MOUNT: CEILING MOUNT						
			HARDWARE: SEE ITEM No. 3						
			CONTROL: SEE ITEM No. 3						
			FABRIC: C.O.M. / VFF / EVALEIGH / SPILLED TEA / 124 GOODS						
Total Item 2 =									\$ 303.80
3	3	SETS	ASSEMBLED TRACKS FOR RIPPLEFOLD SELF LINED DRAPERIES		SUITES	108.000		\$ 162.30	\$ 486.90
	1	SETS	MOUNT: CEILING MOUNT		SUITES	56.000		\$ 127.80	\$ 127.80
			HARDWARE: EXTRUDED ALUMINUM ARCHITECTURAL ASSEMBLED UNI TRACK, POWDER COATED WHITE						
			CONTROL: 72" METAL (BRASS) BATONS						
Total Item 3 =									\$ 614.70





Today's Date: 06-Nov-25
Quote valid until: 05-Jan-26

Quoted by: Julian Higuera